



EASYMAR
MARINE & ENERGY SERVICES



EASY SOLUTIONS

We're excited to introduce you to EasyMar LTD, your trusted partner in delivering easy solutions for a wide range of marine and energy services in Turkey. With our extensive experience and commitment to excellence, we focus on providing solutions that meet all your vessel maintenance and repair needs, guaranteeing smooth and efficient operations from start to finish.



VISIT OUR WEBSITE

www.easymar.net





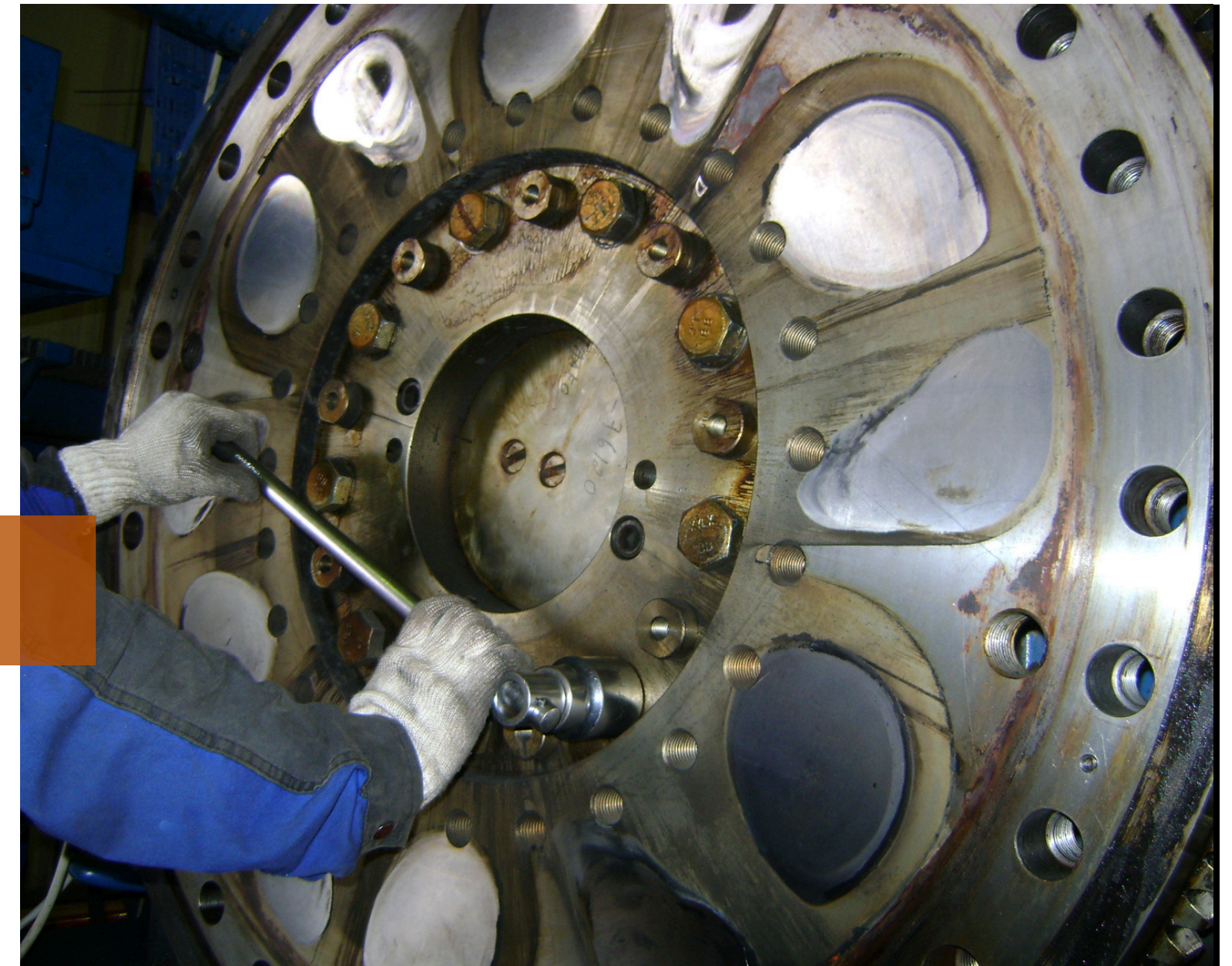
OUR PREMISES



Welcome to Easymar!
Your unique partner to assist you 24/7
Please visit us to see our workshops
We will be more than happy to show you our
extensive capabilities on;
Main Office & Maintenance Workshop /Tuzla
Machining & Production Workshop / Tuzla
Branch Office / Rotterdam - Netherlands



DIESEL & GAS ENGINE MAINTENANCE



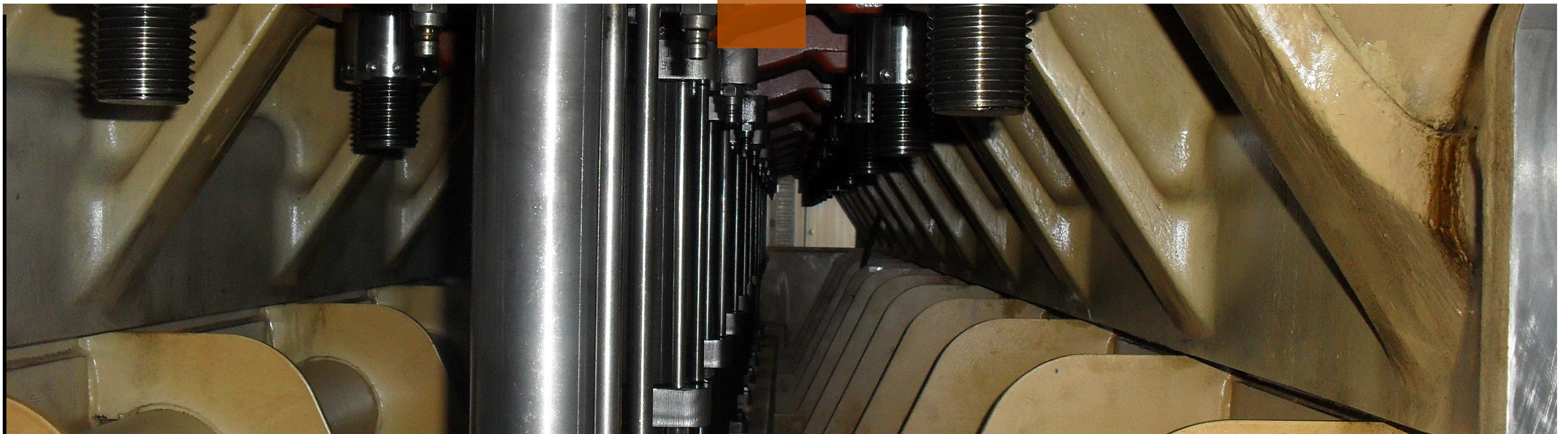
OFFICIAL SUBCONTRACTOR OF WARTSILA

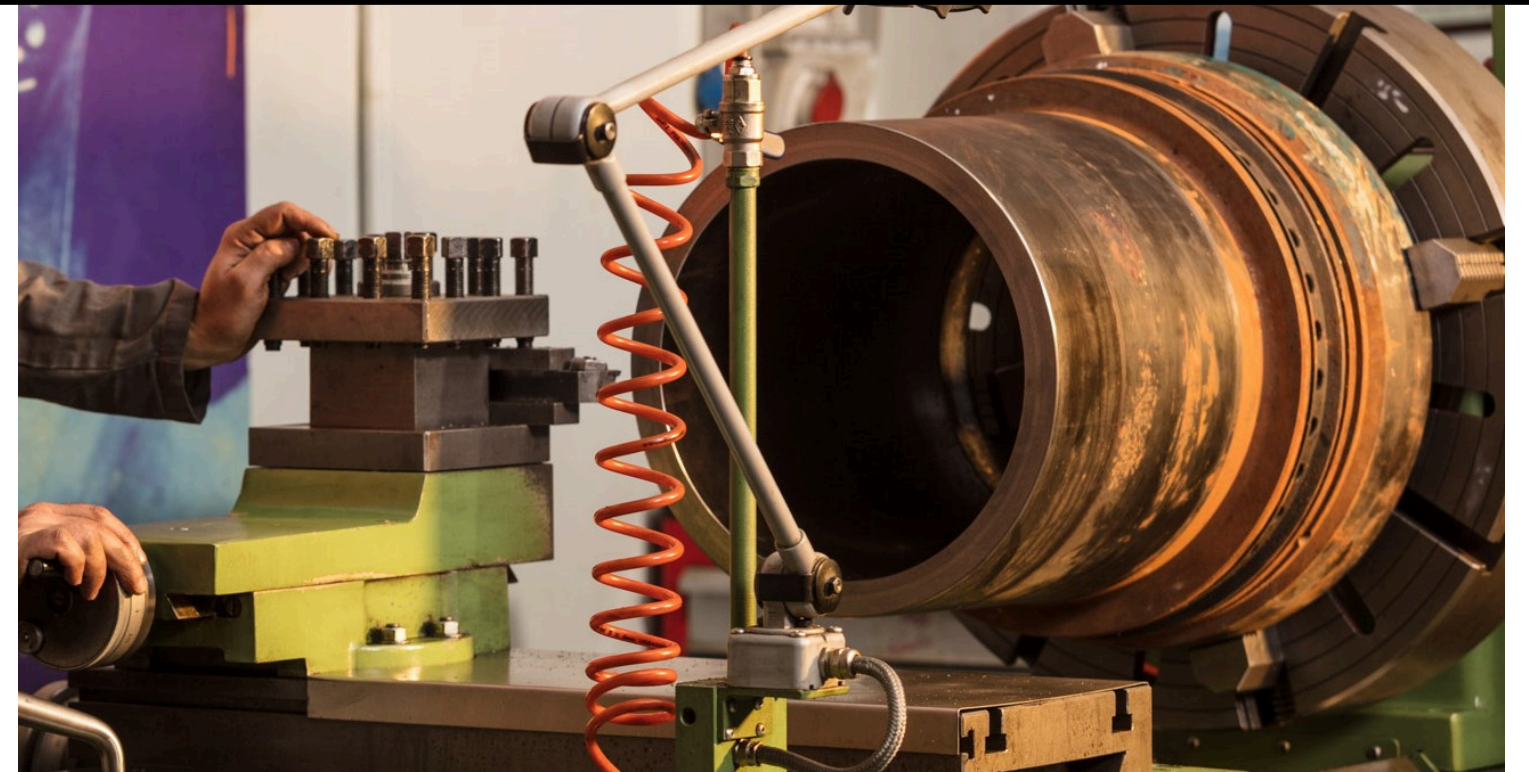
As an official subcontractor of Wartsila, we have extensive knowledge of international maintenance standards and HSE regulations. Our operations are certified under the strictest guidelines, including Bureau Veritas ISO 9001, ISO 14001, and ISO 45001, so you can always trust in the quality and safety of our services.



DISCOVER HOW EASYMAR CAN BRING YOUR PROJECTS TO LIFE

Our team of experts—many of whom are former Wartsila engineers with years of experience—are here to develop personalized solutions that keep your vessels and facilities running smoothly. We're here to help you achieve success from start to finish.





RECONDITIONING SERVICES

On our years of expertise, Easymar is a leader in precision machining solutions. We cater to a variety of industries, including maritime, automotive, mining, military and power generation industries. Our commitment to quality and innovation drives everything we do.

email: workshop@easymar.net



CNC MACHINING

On strong foundations of our mission 'to provide top-tier precision machining solutions that exceed industry standards, ensuring customer satisfaction every time', we highly concentrate on every step of manufacturing with great awareness on quality assurance, customer / project requirements, documentation needs.

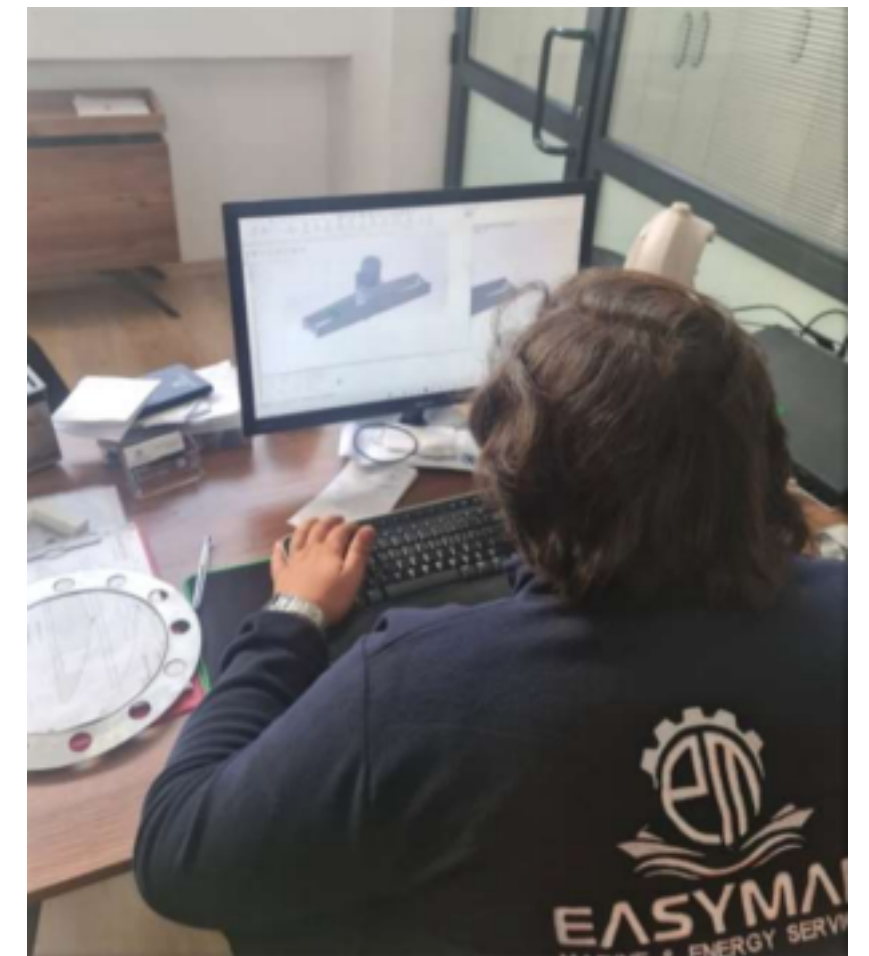
CNC Vertical Machining with Table Size(mm): 1000 x 550 Axis
Movements(x-y-z): 800x550x500 Load Capacity: 500 kg,
CNC Borwerk Table Size(mm) 1250 x 1200 Axis Movements(x-y-z)
1250x1000x1200 Load Capacity 5000 kg





CAD/CAM DESIGN

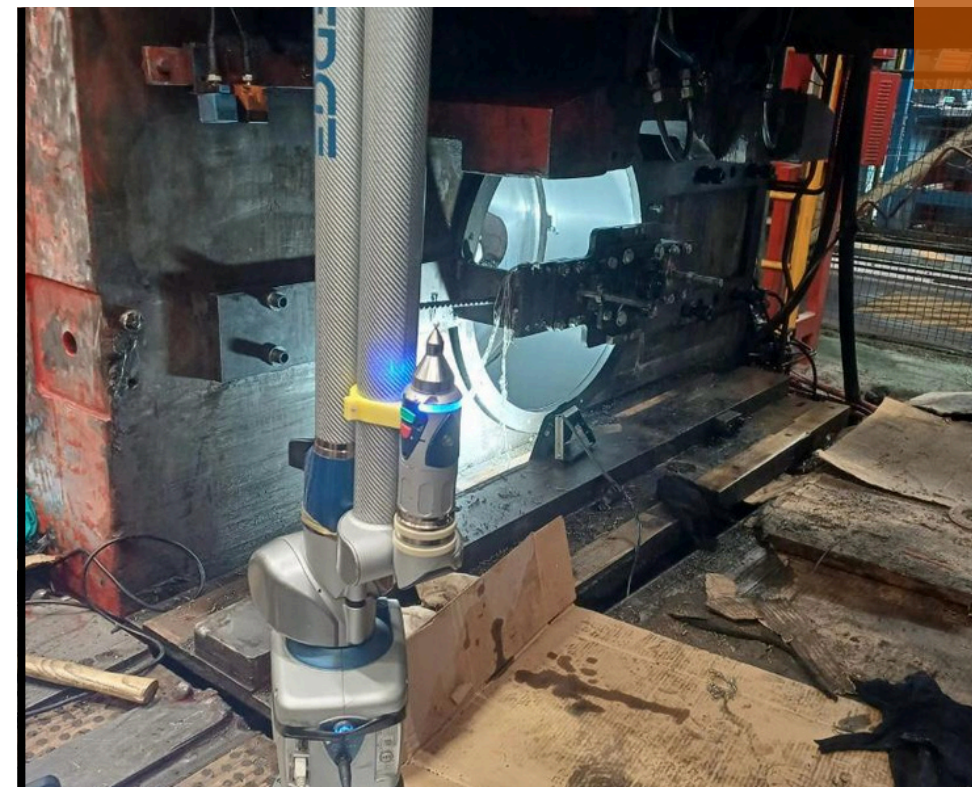
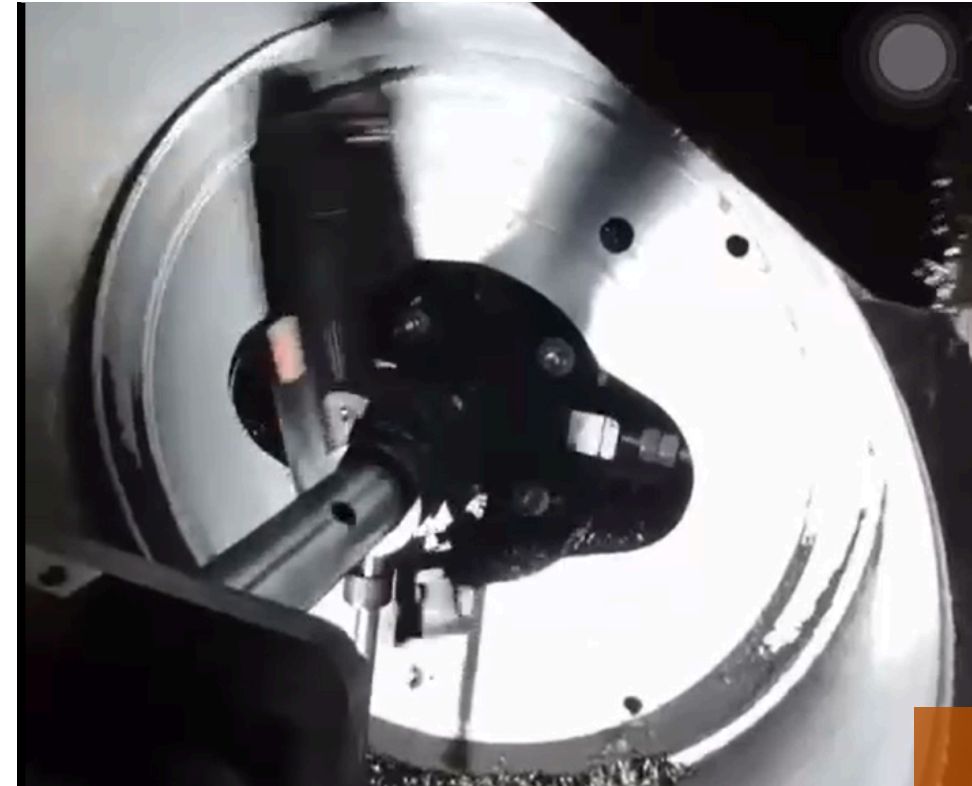
Welcome to our precision and latest tech design availabilities. By means of our 3D Scanning and CMM devices and high technology engineering design and simulation software availabilities we are ready to service your needs on all your re-manufacturing or mass production needs



IN-SITU REPAIR & CMM MEASUREMENT

On site machining experts and design team will be proud to assist you on your needs for ;

- In-situ honing
 - Line Boring
 - Flange facing and X-Y milling
 - Installation of Repair Sleeves & Bushes
 - Crankshaft Machining and Polishing
 - Surface Grinding
 - Shaft Machining and Polishing
- (Build up worn shafts, depending on the application and damage either by welding, metal-spraying, chromium plating or by installing a repair bush)
- Portable Lathe Machining
 - Reaming of bores for shaft line coupling bolts
 - In-Situ Thread repairs for various Thread Sizes
 - Faro Probe Arm Measurement
 - Faro Focus Laser Scanning



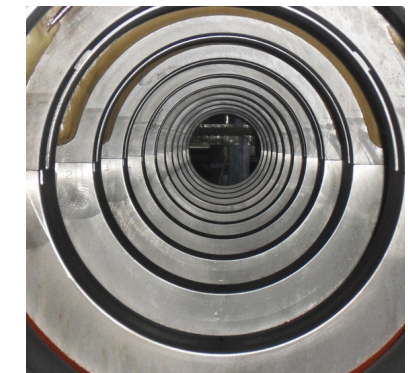
ENGINE MAINTENANCE WORKSHOP

Check our engine maintenance workshop availabilities on our
website : www.easymar.net





ALIGNMENT SERVICES



Coupling, Shaft Line, Surface Flatness Alignment Activities

By means of our latest technology laser alignment device we can measure all common geometric measurements such as roundness, flatness, straightness, squareness, offset and level. The longest distance that we can measure with high accuracy is 40 meters.

Flatness checks for foundations or flanges

Roundness and bore alignment measurements for stern tubes, intermediate bearings, engine blocks, turbine casings, etc

Coupling and shaft alignments for electro motors, alternators, steam turbines, pumps, fans



WELDING SERVICES

For our workshop & in-situ welding repair &
manufacturing services
Welding Experts with Classification Society
Certifications for various methods
please contact us

email : workshop@easymar.net



EASYMAR IN-SITU MACHINING & ALIGNMENT SERVICES

At Easymar, precision and efficiency are key to our Operations. Our certified team handles every alignment project with top-quality and expertise.

We use the Easy-Laser® Shaft Alignment System, perfect for any task—from simple alignments to more advanced jobs, even in challenging environments. It's easy to set up, and with durable materials like aluminum and stainless steel, it delivers reliable results every time.

We're driven by accuracy, innovation, and making sure our clients are always satisfied.

Line Boring

Precise Line boring up to 900mm diameter for variety of requirements as Cylinder Liner Block, Stern Tube Bearing Housing, Main Bearing Bore,



Shaft Machining and Polishing

Shaft Surface Repair Activities using machining, polishing, laser cladding methods



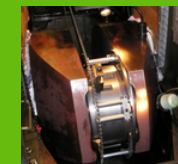
Faro Probe Arm Measurement

Accurate measurement of full parts quickly and easily, including those with complex geometries. Supply detailed inspection & measurement records.



Crankshaft Machining and Polishing

In-Situ Crankshaft Machining with Portable Crankshaft Machining Device, Performing necessary hardness measurements, Certified Ultrasonic Crack Testing availabilities



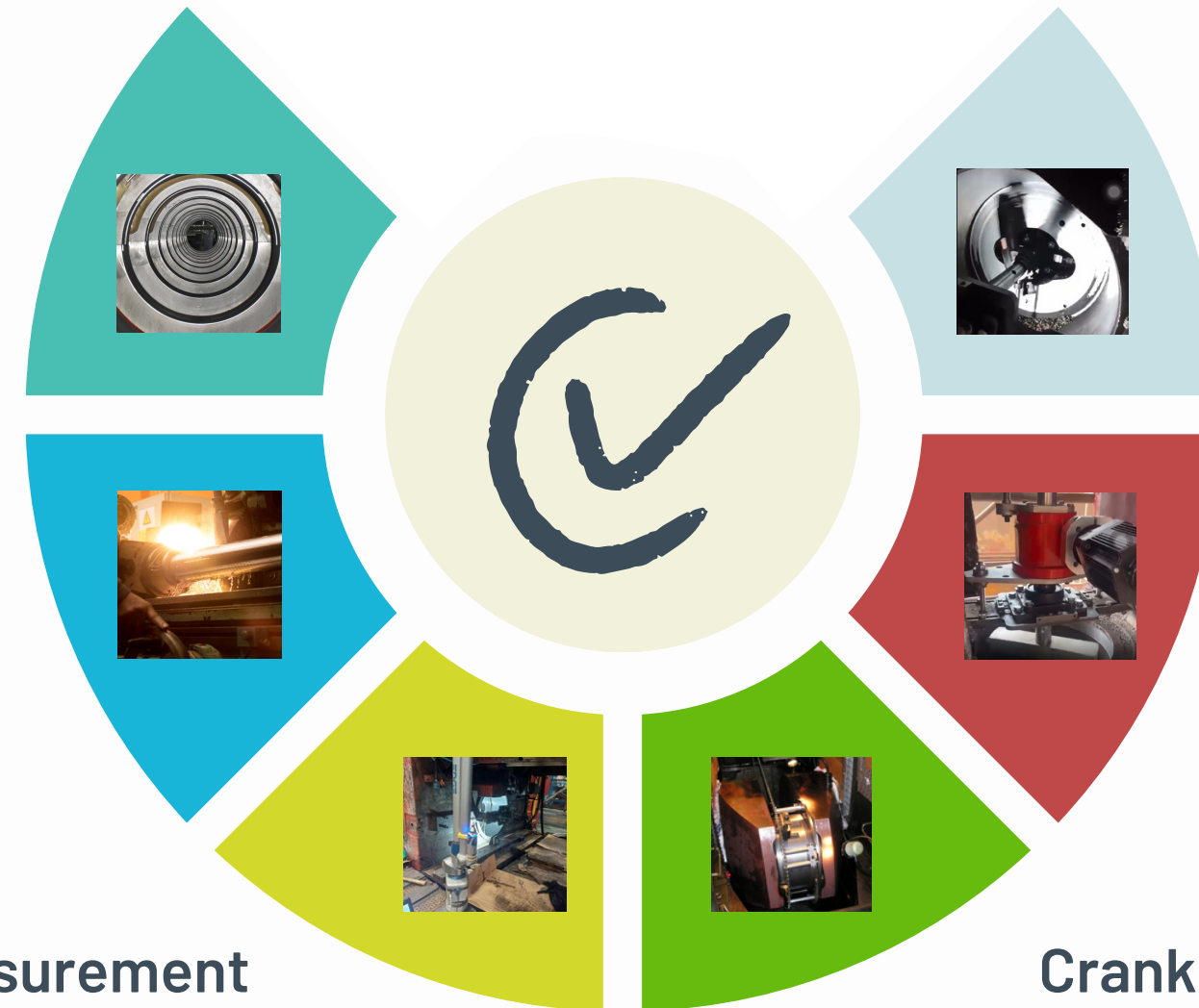
Flange facing and X-Y milling

During the new building stage, on behalf of the shipyard, equipment installation or service of the vessel or plant whenever plane surfaces were found damaged or distorted and are in need of remachining

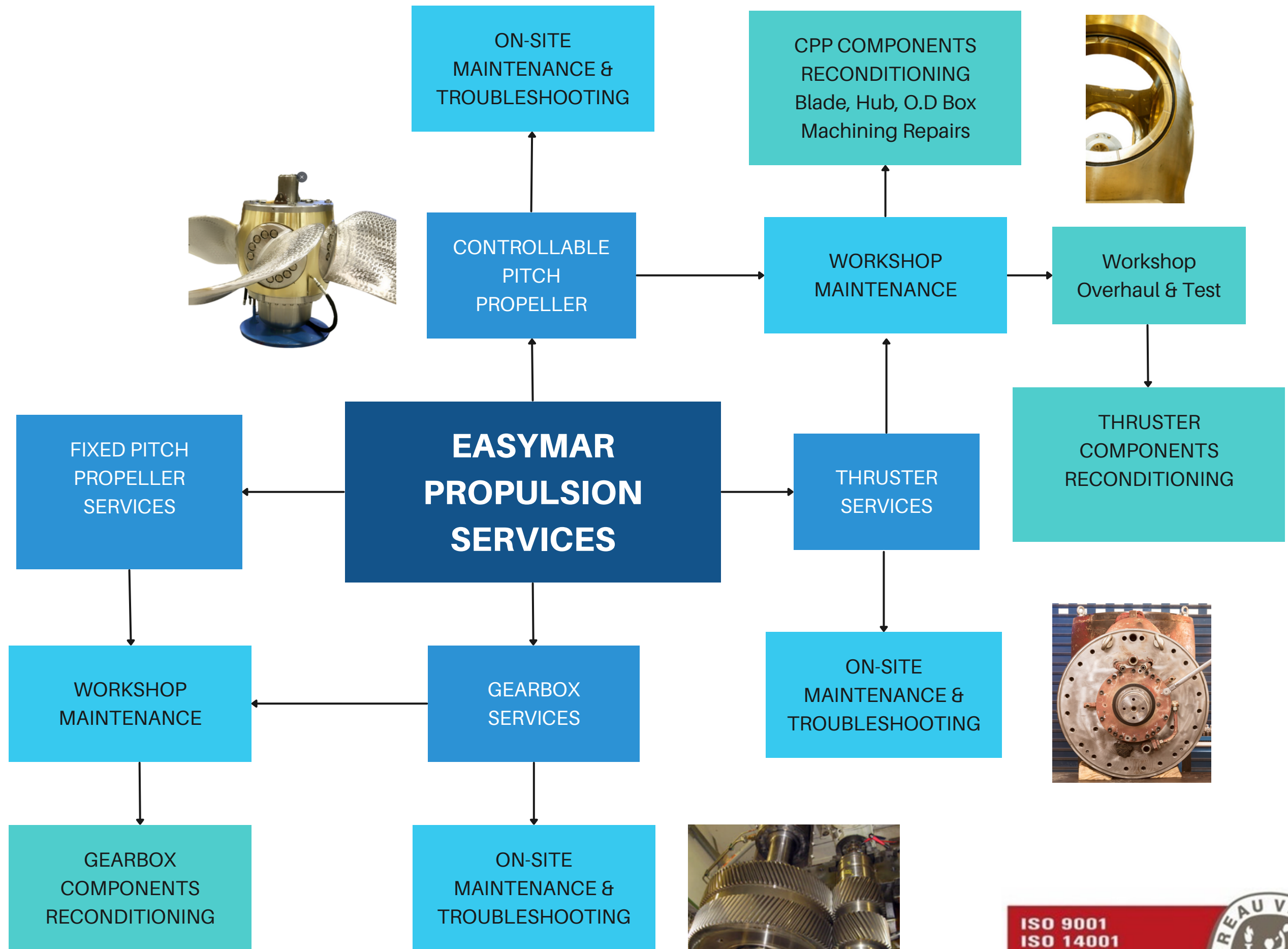
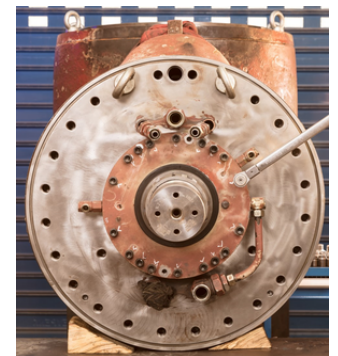
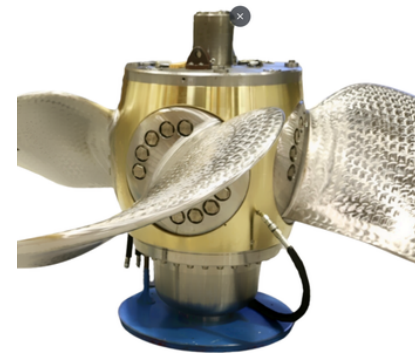


Installation of Sleeves and Bushes

Repair Sleeve Manufacturing and installation for distorted bores or engine block liner bore surfaces that are exposed to cavitation and corrosion effects.



OUR PROPULSION SYSTEM SERVICES



"Contact us today for a free quote and discover how Easymar can bring your projects to life."

Garrett

ADVANCING MOTION

MASTER DISTRIBUTOR

Easymar is now the Master Distributor for Garrett Motion, a global leader in turbocharging technology. Garrett is known for its cutting-edge advancements, delivering innovative solutions that focus on emission reduction and energy efficiency. As part of this partnership, Easymar will provide easy solutions to effectively bring Garrett's turbocharging technology into your operations, improving performance and sustainability.



OUR PRODUCTS / CMR *E-PULSE*

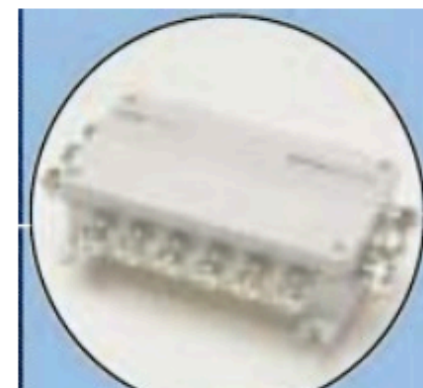
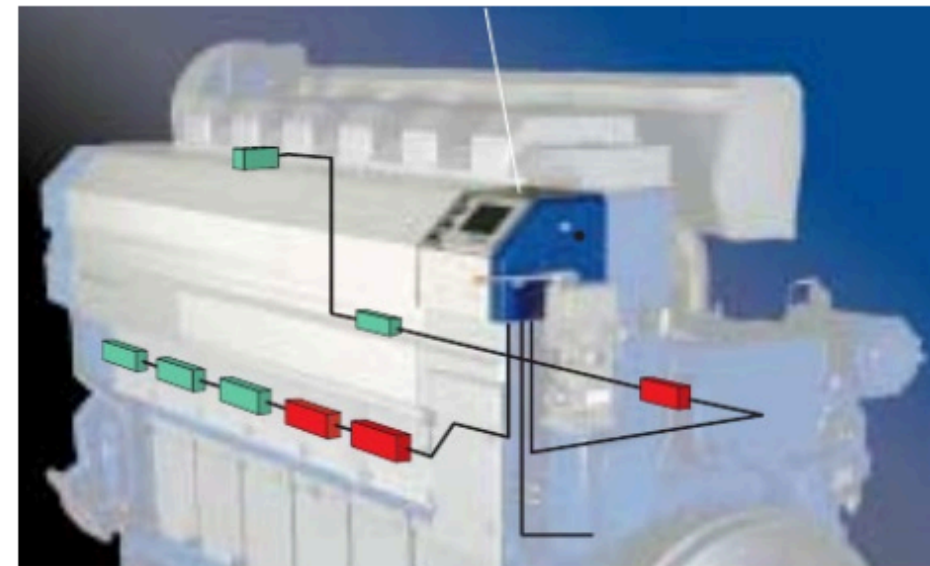
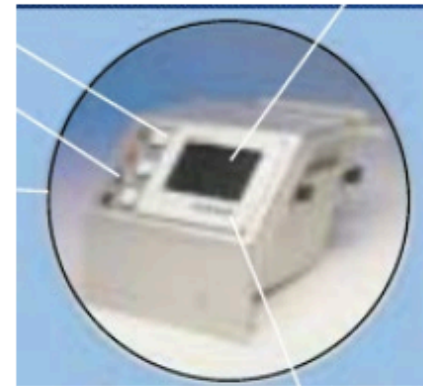
We're excited to announce that Easymar has formed a partnership with Messi Service for CMR Integrated Automation and Electrical Solutions, a leader in advanced automation technology. This collaboration combines our expertise in Electrical & Automation (E&A) Services with their innovative solutions, increasing efficiency and precision for our clients.

Together, we'll provide cutting-edge automation services, including:

- Integrated Alarm, Monitoring & Control Systems
- Electrical Propulsion
- Design System Integration & Installation (marine or power plants)
- System Electrical Installation with management system interfaces
- Start-up & Sea Trials / Plant Trials
- Maintenance & Service
- Recommendation & Advisory Engineering

We're excited to deliver these advanced services with easy solutions to help you achieve greater operational success.

E-PULSE



WECS Migration to E PULSE

- **Local Operating Panel (LOP):**
 - Touch screen Display + dedicated HMI
 - Engine or wall mounting acc. to configuration

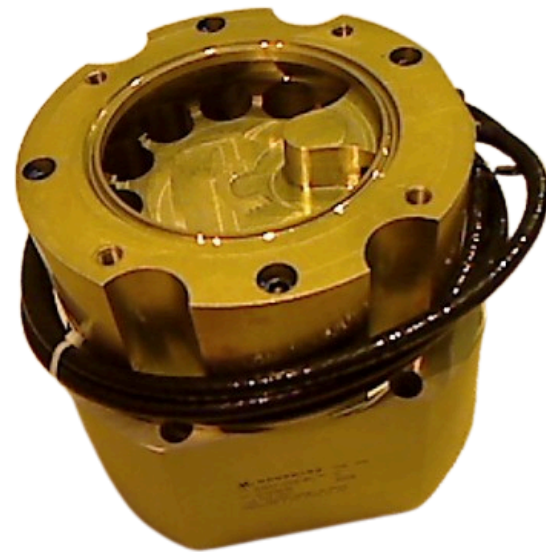
- **Main Control Cabinet (MCC)**
 - Contains the electronics that processes all engine parameters.
 - MCC is installed separately close to the engine
 - Communication module for remote assistance.
 - Interface to external systems : Propulsion, Automation, VMS, Plant management system

- **Sensors Junction Boxes + cables:**
 - New JB dimensions are exactly the same as the existing ones on the engine.
 - Sensors Cabling Topology remains the same
 - Existing sensors + stock remain the same

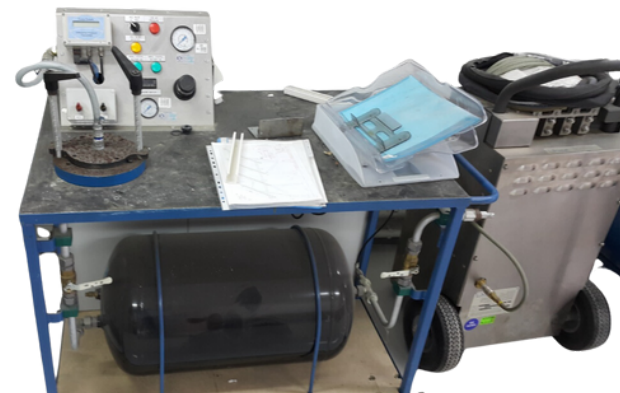


With our extensive experience and commitment to excellence, we are dedicated to meeting all your needs on vessel maintenance and repair solutions for Fuel Injection Equipment

Contact us today for a free quote and discover our refurbishment services for SOGAV Valves and DF injection valves
email: service@easymar.net



INJECTION SYSTEM SERVICES





*Mechanical & Automation Site Services for **WinGD** engines*

Our Vessel Service team of highly skilled site supervisors, field service technicians and E&A engineers are ready to service your WinGD engines trained in Authorized Service Culture and gained experience on;

- Electrical & Automation Troubleshooting and Maintenance. Engine Operational Trend & Event Log Analysis
- Mechanical Site Services, Maintenance and Repair Activities, Commissioning and Start-Up Assistance, Implementation of Upgrades and Modifications on Manufacturer's Recommendations and Bulletins.

Contact Us

Mob: + (90) 533 714 90 78

Email: service@easymar.net

- Injection Control Unit & Valve Control Unit Sealing Kits
- Injection Control Valve Spares, VCU Cylinder & Pistons, PCV Spares
- Fuel Quantity Pistons & Sensors, Pressure Transmitters, Temperature Sensors, Crank Angle Sensor Spares
- Automation Equipment as Rail Valves, Control Modules (FCM), Solenoid Valves, Interface Boxes, Terminal Boxes

Our Certifications

Bureau Veritas Certification





Bureau Veritas Certification



Bureau Veritas Certification



THANK YOU !

LET US MAKE THINGS EASIER FOR YOU



ADDRESS

İshakpaşa Cad. Modsan Sanayi sitesi A
5/6 Orhanlı Tuzla / İSTANBUL(Merkez
Ofis/Servis Atölyesi)

EMAIL

sales@easymar.net
service@easymar.net
workshop@easymar.net

PHONE

+90 216 213 02 28

WEBSITE

www.easymar.net